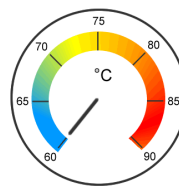


MOLYDUVAL

Aladin GP Spray



Graphite Dry Film Lubricant

A fast drying bonded coating spray based on Graphite. Used for service-free dry lubrication under heavy load. A thin dry film is formed which sticks well to many kind of surface. Before drying it flows into nooks, crannies, and tight spots. It can even flow by capillary action. The film is not powdery unless scraped from the surface.

Properties

- * prevents seizure and rust
- * reduced friction coefficient with increasing pressure
- * lower tool wear
- * hochgradig rein
- * frei von abrasiven Bestandteilen
- * reduces the friction coefficient
- * suitable for very high temperatures

Applications

- * for joints in instruments
- * for sliding surfaces in aeronautics
- * for enhance running-in lubrication of bearings, guidelines and gears
- * for cold flow pressing
- * for tool preparation in stamping, deep drawing, deridging
- * for cold forming of metals
- * for lubrication of machine parts which should not be contaminated by oil or grease
- * for bearings in precision engineering, for for-life-lubrication
- * for wedges in printing machines
- * for tool preparation in metal pressing
- * for chain lubrication in dusty surroundings
- * for lubrication in vacuum
- * as separating agent in high temperature range

Technical Datas

Color		black
Temperature Range	°C	1000
Drying Time 20°C, griffest	min	1

The indicated service temperatures are guide values depending on the lubricants composition and on the application. They may vary in case of special influences or ongoing use.

For further information, please see our website www.molyduval.com or consult your local representative.

The content of this manual is based on our current knowledge and experience in the development and manufacture of lubricants. Because of the complexity of tribological systems, the effect of our products depends on many parameters, which we cannot assess and which influence we cannot evaluate. For this reason general statements about the function of our products are not possible. The information in this manual, therefore, contains non-binding guidelines, which should give the technical trained reader information on possible applications. The information in this manual does not include property assurances or warranties or guarantees to the properties or suitability of this product in a specific application. Prior to its use it is absolutely necessary to test this product in the application to ensure that the product and its use is safe, economical and fully suitable. It should proceed with due diligence.